

## Schedule of Common Lifts

<b>Lift Plan No.</b>	001
<b>Load Description</b>	13-19te Single Drum Roller Pad Foot Shells
<b>Lift Category</b>	Basic

### Pictures/Drawings of Slung Load



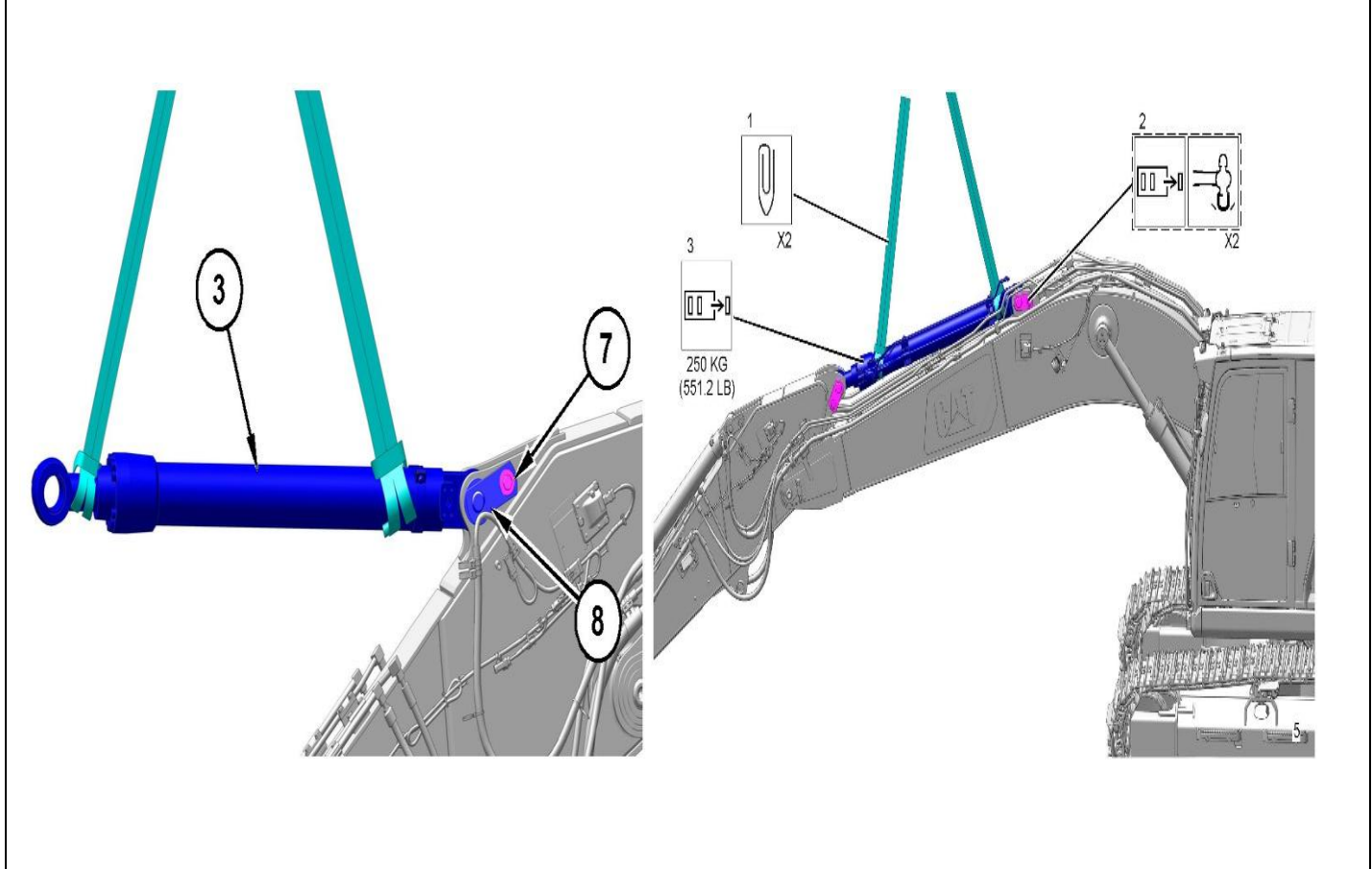
<b>Load Weight (kg)</b>	900kg	<b>Accessory Weight (kg)</b>	5.7kg	<b>Quick Hitch (kg)</b>	125kg	<b>No. Lifting Points</b>	2	<b>Total Weight (kg)</b>	<b>1030.7kg</b>
<b>Characteristics</b>	Length: 2.2m / Width: 2.0m / Height: 1.0m								
<b>Lifting Accessory</b>	1 x 2.8te 4m 2-leg chain set, 1 x 12te bow shackle								
<b>Ancillary Equipment</b>	N/A								
<b>Alternative Accessories</b>	1x 12te bow shackle 2x 1te 4m webbing sling (as a minimum)								
<b>Safety Restrictions</b>	Check stability of load before lifting / Exclusion zone								
<b>Method</b>	At 2 points choke slings around both ends of pump, attach bow shackle and quick hitch								
<b>Specific Team or Control Requirements</b>	Possible COSHH spillage (PPE required)								
<b>Special Notes</b>	All chains must be within 90 degrees								

Owner: Head of HSQE	Version: 1	LF298
Uncontrolled if printed or copied. Always check for latest version.		Page 1 of 1

## Schedule of Common Lifts

<b>Lift Plan No.</b>	002
<b>Load Description</b>	Excavators Hydraulic Cylinders 8te, 13te, 20te, 30te, 40te, 50te, 70te.
<b>Lift Category</b>	Basic

**Pictures/Drawings of Slung Load**

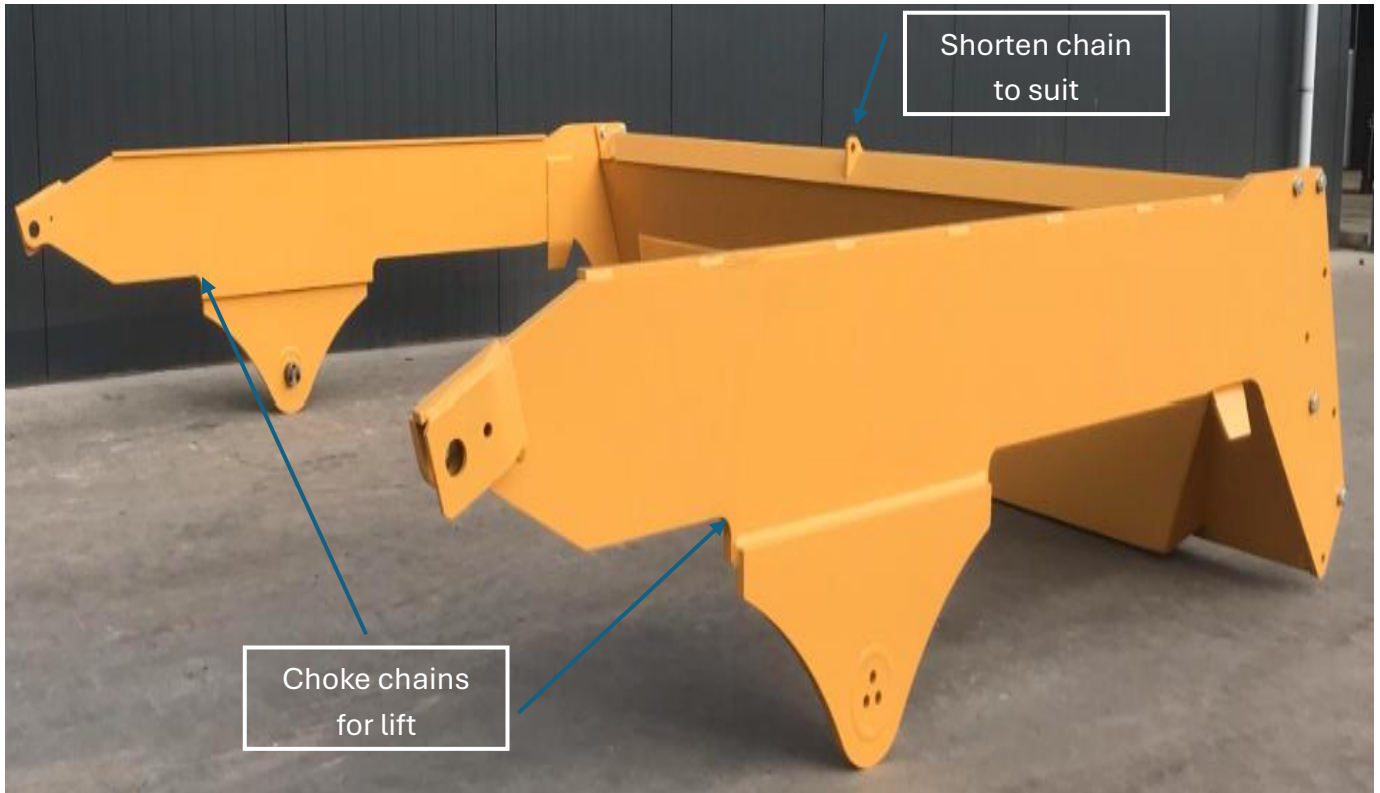


<b>Load Weight (kg)</b>	1100kg	<b>Accessory Weight (kg)</b>	6kg	<b>Quick Hitch (kg)</b>	125kg	<b>No. Lifting Points</b>	2	<b>Total Weight (kg)</b>	<b>1231kg</b>
<b>Characteristics</b>	Maximum: Length 3.0m Diameter 0.3m								
<b>Lifting Accessory</b>	1 x 12te bow shackle, 2 x 2te 3m Slings								
<b>Ancillary Equipment</b>	N/A								
<b>Alternative Accessories</b>	None								
<b>Safety Restrictions</b>	Check stability of load before lifting / Exclusion zone								
<b>Method</b>	Choke cylinder at 2 points, connect to bow shackle.								
<b>Specific Team or Control Requirements</b>	Possible COSHH spillage (PPE required)								
<b>Special Notes</b>	All slings must be within 90 degrees								

## Schedule of Common Lifts

<b>Lift Plan No.</b>	003
<b>Load Description</b>	Articulated Dump Truck Rear Tail Gate (complete unit) (ADT) 20te to 45te (Volvo & Komatsu)
<b>Lift Category</b>	Basic

### Pictures/Drawings of Slung Load

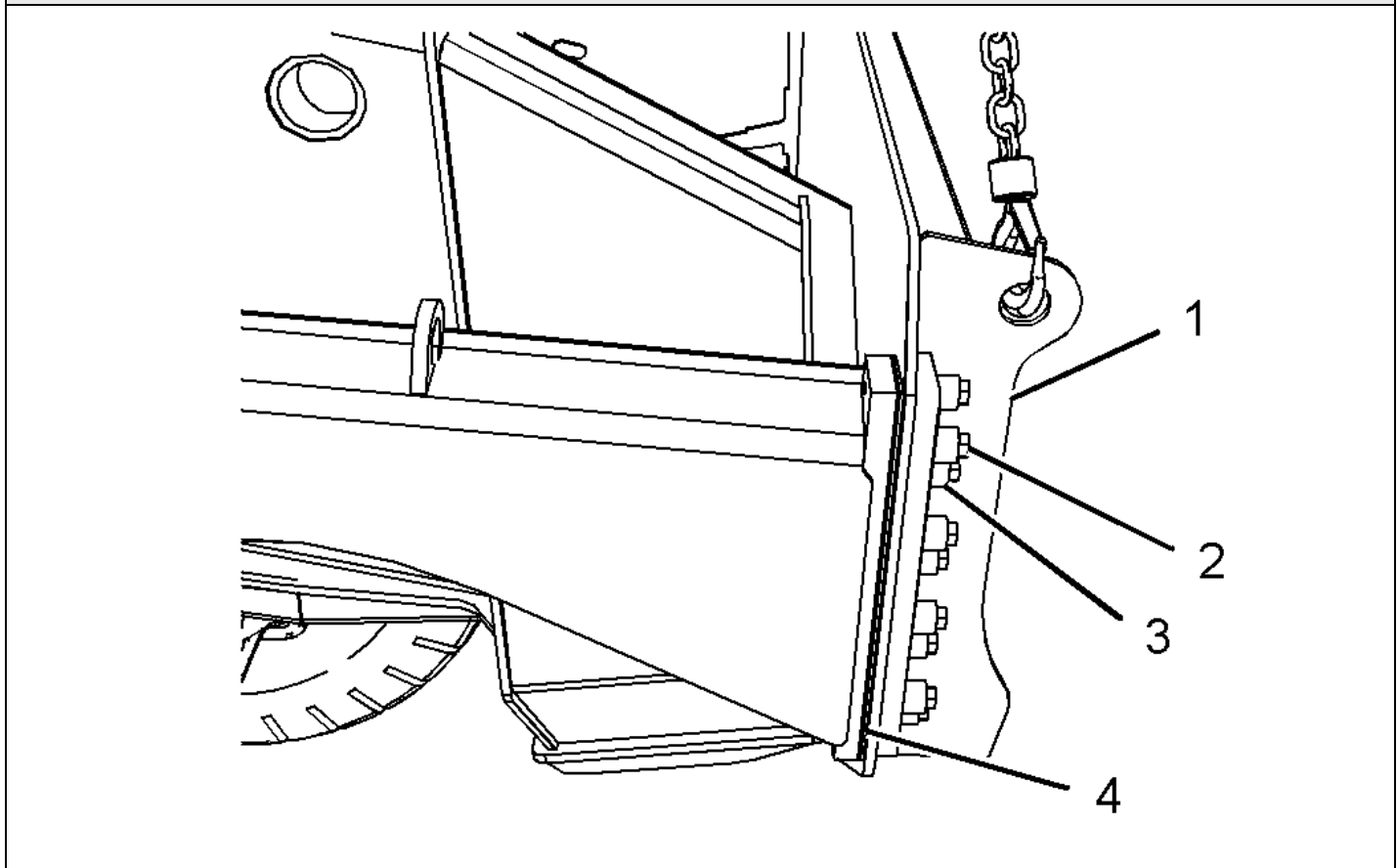


<b>Load Weight (kg)</b>	1200kg	<b>Accessory Weight (kg)</b>	25kg	<b>Quick Hitch (kg)</b>	125kg	<b>No. Lifting Points</b>	3	<b>Total Weight (kg)</b>	<b>1350kg</b>
<b>Characteristics</b>	Maximum: Length: 3.0m Width: 3.0m Height: 1.0m								
<b>Lifting Accessory</b>	1x 12te bow shackle, 1 x 4 leg 2m 6.7te chain set								
<b>Ancillary Equipment</b>	Tag line								
<b>Alternative Accessories</b>	None								
<b>Safety Restrictions</b>	Check stability of load before lifting / Exclusion zone								
<b>Method</b>	Connect chains to lifting points, connect chain set to bow shackle.								
<b>Specific Team or Control Requirements</b>	Possible COSHH spillage (PPE required)								
<b>Special Notes</b>	All chains must be within 90 degrees, tag line required								

## Schedule of Common Lifts

<b>Lift Plan No.</b>	004
<b>Load Description</b>	Articulated Dump Truck Rear Tail Gate only (ADT) 20te to 45te (Bell & Caterpillar)
<b>Lift Category</b>	Basic

**Pictures/Drawings of Slung Load**

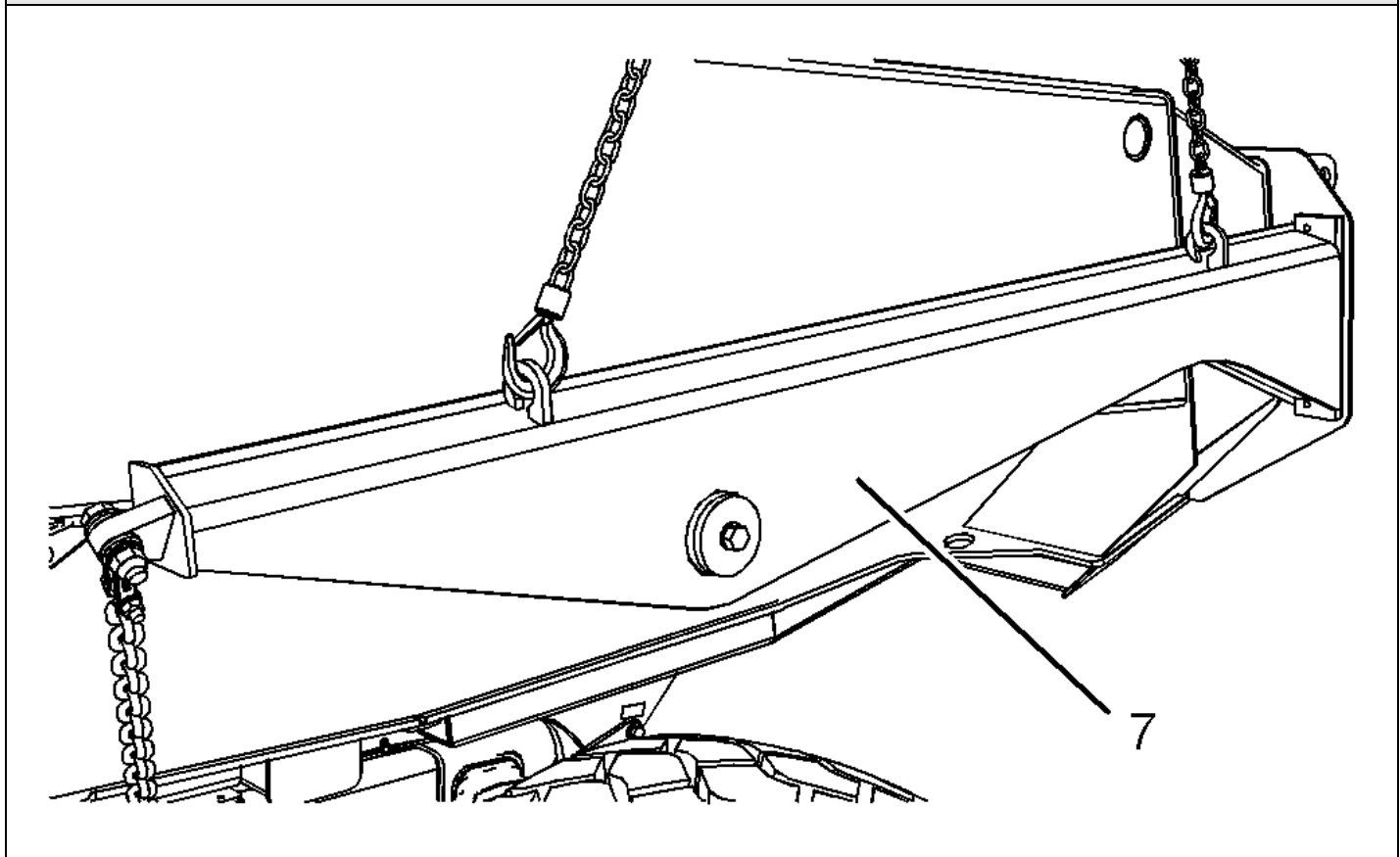


<b>Load Weight (kg)</b>	960Kg	<b>Accessory Weight (kg)</b>	5.7kg	<b>Quick Hitch (kg)</b>	125kg	<b>No. Lifting Points</b>	2	<b>Total Weight (kg)</b>	<b>1090.5kg</b>
<b>Characteristics</b>	Maximum – Length 3.0m width 0.25m height 0.30m								
<b>Lifting Accessory</b>	1 x 2.8te 4m 2-leg chain set, 1 x 12te bow shackle								
<b>Ancillary Equipment</b>	None								
<b>Alternative Accessories</b>	None								
<b>Safety Restrictions</b>	Check stability of load before lifting / Exclusion zone								
<b>Method</b>	Connect chains to lifting points, connect chain set to bow shackle.								
<b>Specific Team or Control Requirements</b>	Possible COSHH spillage (PPE required)								
<b>Special Notes</b>	All Chains must not exceed 90 degrees								

## Schedule of Common Lifts

<b>Lift Plan No.</b>	005
<b>Load Description</b>	Articulated Dump Truck Rear Tail Gate Side Arms (ADT) 20te to 45te (Caterpillar)
<b>Lift Category</b>	Basic

**Pictures/Drawings of Slung Load**



<b>Load Weight (kg)</b>	175kg	<b>Accessory Weight (kg)</b>	5.7kg	<b>Quick Hitch (kg)</b>	125kg	<b>No. Lifting Points</b>	2	<b>Total Weight (kg)</b>	<b>305.7kg</b>
<b>Characteristics</b>	Maximum – Length 3.0m width 0.25m height 0.30m								
<b>Lifting Accessory</b>	1 x 2.8te 4m 2-leg chain set, 1 x 12te bow shackle								
<b>Ancillary Equipment</b>	None								
<b>Alternative Accessories</b>	None								
<b>Safety Restrictions</b>	Check stability of load before lifting / Exclusion zone								
<b>Method</b>	Connect chains to lifting points, connect chain set to bow shackle.								
<b>Specific Team or Control Requirements</b>	Possible COSHH spillage (PPE required)								
<b>Special Notes</b>	All Chains must not exceed 90 degrees								

## Schedule of Common Lifts

<b>Lift Plan No.</b>	006
<b>Load Description</b>	Articulated Dump Truck Rear Tail Gate Side Arms (ADT) 20te to 45te (Bell)
<b>Lift Category</b>	Basic

**Pictures/Drawings of Slung Load**



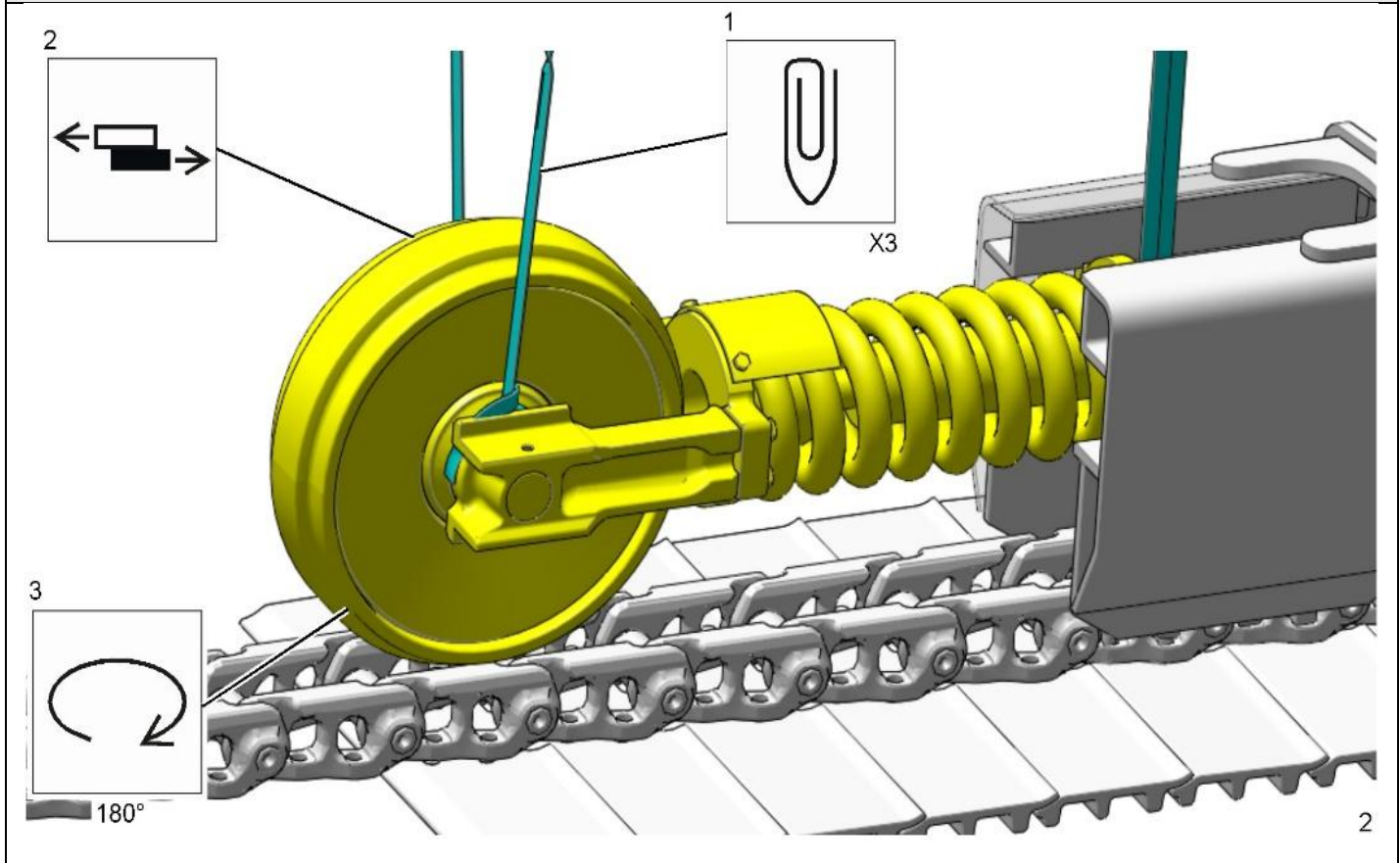
Hook drop chain  
to lifting point

<b>Load Weight (kg)</b>	250kg	<b>Accessory Weight (kg)</b>	6.5kg	<b>Quick Hitch (kg)</b>	125kg	<b>No. Lifting Points</b>	1	<b>Total Weight (kg)</b>	<b>381.5kg</b>
<b>Characteristics</b>	Maximum – Length 3.0m width 0.25m height 0.30m								
<b>Lifting Accessory</b>	1 x 2te drop chain (1m); 1 x 12te bow shackle								
<b>Ancillary Equipment</b>	None								
<b>Alternative Accessories</b>	None								
<b>Safety Restrictions</b>	Check stability of load before lifting / Exclusion zone								
<b>Method</b>	Connect chains to lifting points, connect chain set to bow shackle.								
<b>Specific Team or Control Requirements</b>	Possible COSHH spillage (PPE required)								
<b>Special Notes</b>	All Chains must not exceed 90 degrees								

## Schedule of Common Lifts

<b>Lift Plan No.</b>	007
<b>Load Description</b>	Excavator Track Idler Wheels 13te to 20te
<b>Lift Category</b>	Basic

**Pictures/Drawings of Slung Load**

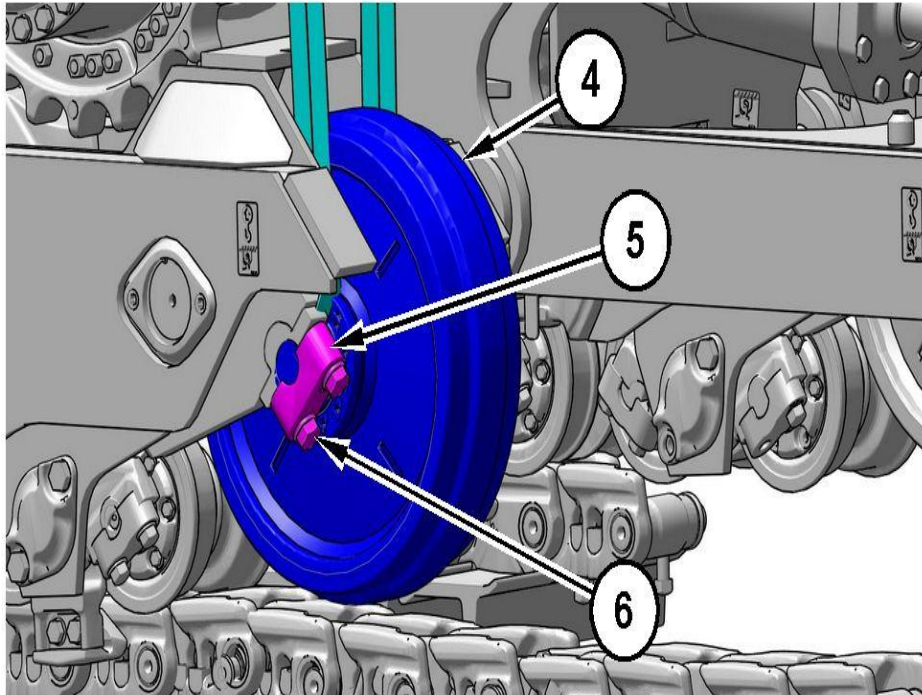


<b>Load Weight (kg)</b>	250kg	<b>Accessory Weight (kg)</b>	6kg	<b>Quick Hitch (kg)</b>	125kg	<b>No. Lifting Points</b>	3	<b>Total Weight (kg)</b>	<b>381kg</b>
<b>Characteristics</b>	Maximum: Length: 1.5m Width: 0.35m Height: 0.7m								
<b>Lifting Accessory</b>	1 x 12te bow shackle, 3 x 1te 2m slings								
<b>Ancillary Equipment</b>	N/A								
<b>Alternative Accessories</b>	None								
<b>Safety Restrictions</b>	Check stability of load before lifting / Exclusion zone								
<b>Method</b>	At 3 points choke slings around both idler side arms, attach to bow shackle and quick hitch								
<b>Specific Team or Control Requirements</b>	Possible COSHH spillage (PPE required)								
<b>Special Notes</b>	All slings must be within 90 degrees								

## Schedule of Common Lifts

<b>Lift Plan No.</b>	008
<b>Load Description</b>	Dozer Track Idler Wheels D6, D5,
<b>Lift Category</b>	Basic

### Pictures/Drawings of Slung Load

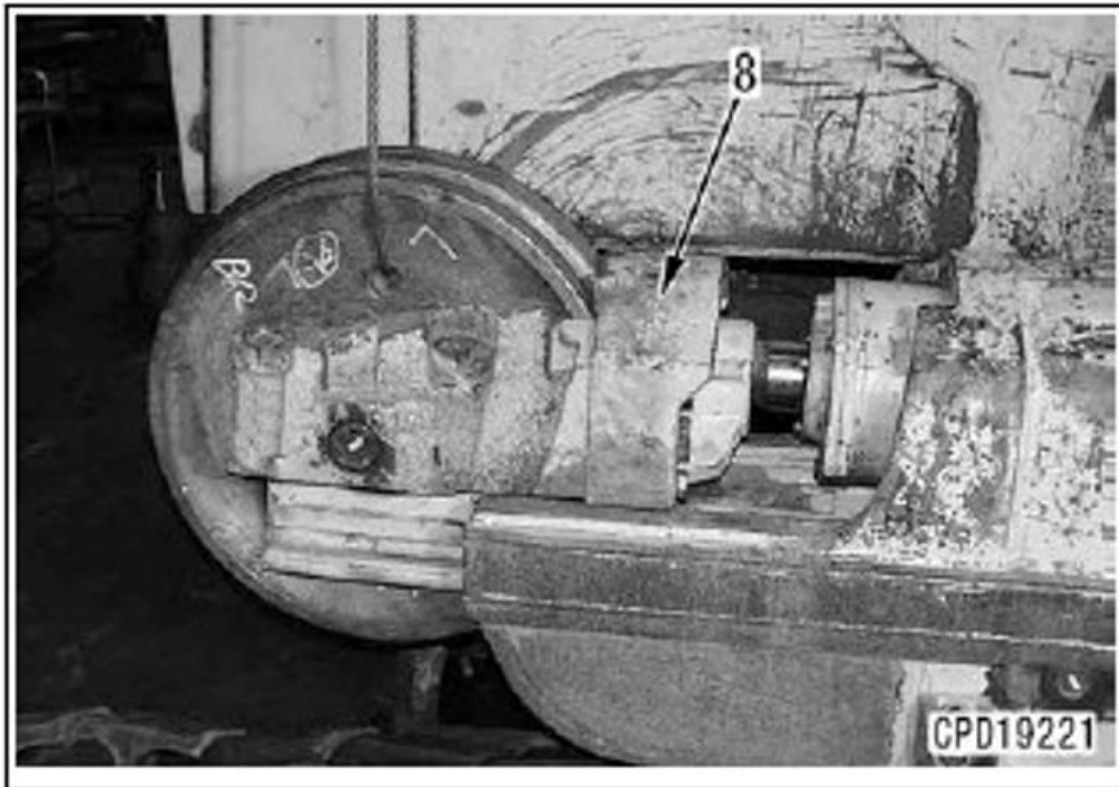


<b>Load Weight (kg)</b>	180kg	<b>Accessory Weight (kg)</b>	5.5kg	<b>Quick Hitch (kg)</b>	125kg	<b>No. Lifting Points</b>	2	<b>Total Weight (kg)</b>	<b>310.5kg</b>
<b>Characteristics</b>	Maximum: Length: 0.7m Width: 0.35m Height: 0.7m								
<b>Lifting Accessory</b>	1 x 12te bow shackle, 2 x 1te 2m slings								
<b>Ancillary Equipment</b>	N/A								
<b>Alternative Accessories</b>	None								
<b>Safety Restrictions</b>	Check stability of load before lifting / Exclusion zone								
<b>Method</b>	At 2 points choke slings around both idler shaft, attach to bow shackle and quick hitch								
<b>Specific Team or Control Requirements</b>	Possible COSHH spillage (PPE required)								
<b>Special Notes</b>	All slings must be within 90 degrees								

## Schedule of Common Lifts

<b>Lift Plan No.</b>	009
<b>Load Description</b>	Dozer Track Idler Wheels D65, D61,
<b>Lift Category</b>	Basic

### Pictures/Drawings of Slung Load



<b>Load Weight (kg)</b>	200kg	<b>Accessory Weight (kg)</b>	5.5kg	<b>Quick Hitch (kg)</b>	125kg	<b>No. Lifting Points</b>	1	<b>Total Weight (kg)</b>	<b>330.5kg</b>
<b>Characteristics</b>	Maximum: Length: 0.7m Width: 0.35m Height: 0.7m								
<b>Lifting Accessory</b>	1 x 12te bow shackle, 1 x 1te 2m slings								
<b>Ancillary Equipment</b>	N/A								
<b>Alternative Accessories</b>	None								
<b>Safety Restrictions</b>	Check stability of load before lifting / Exclusion zone								
<b>Method</b>	Pass sling through lifting hole in idler wheel and attach both ends of sling to shackle								
<b>Specific Team or Control Requirements</b>	Possible COSHH spillage (PPE required)								
<b>Special Notes</b>	N/A								

## Schedule of Common Lifts

<b>Lift Plan No.</b>	010
<b>Load Description</b>	3te – 9te Empty Skips
<b>Lift Category</b>	Basic

### Pictures/Drawings of Slung Load



<b>Load Weight (kg)</b>	1000kg	<b>Accessory Weight (kg)</b>	25kg	<b>Quick Hitch (kg)</b>	125kg	<b>No. Lifting Points</b>	4	<b>Total Weight (kg)</b>	<b>1150kg</b>
<b>Characteristics</b>	Maximum: Length: 2.4m Width: 2.4m Height: 1.5m								
<b>Lifting Accessory</b>	1 x 12te bow shackle, 4 leg 2m 6.7te chain set.								
<b>Ancillary Equipment</b>	N/A								
<b>Alternative Accessories</b>	None								
<b>Safety Restrictions</b>	Check stability of load before lifting / Exclusion zone								
<b>Method</b>	Connect chains to lifting points, connect chain set to bow shackle.								
<b>Specific Team or Control Requirements</b>	Possible COSHH spillage (PPE required)								
<b>Special Notes</b>	All chains must be within 90 degrees								

Owner: Head of HSQE	Version: 1	LF298
<b>Uncontrolled if printed or copied. Always check for latest version.</b>		Page 1 of 1

## Schedule of Common Lifts

<b>Lift Plan No.</b>	011
<b>Load Description</b>	Vacuum Pump for Dust Suppression
<b>Lift Category</b>	Basic

### Pictures/Drawings of Slung Load

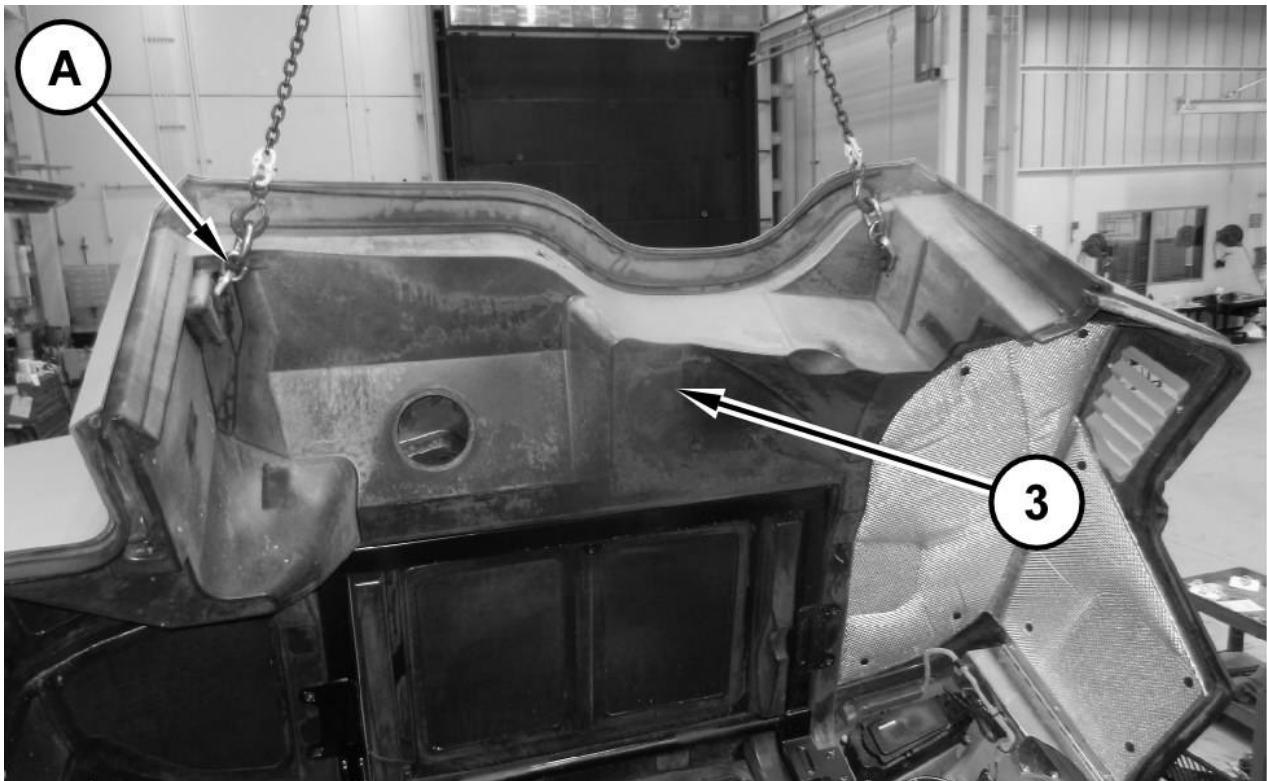


<b>Load Weight (kg)</b>	500kg	<b>Accessory Weight (kg)</b>	6kg	<b>Quick Hitch (kg)</b>	125kg	<b>No. Lifting Points</b>	2	<b>Total Weight (kg)</b>	<b>631kg</b>
<b>Characteristics</b>	Maximum: Length: 0.7m Width: 0.4m Height: 0.6m								
<b>Lifting Accessory</b>	1 x 12te bow shackle, 2 x 2te 3m Slings								
<b>Ancillary Equipment</b>	N/A								
<b>Alternative Accessories</b>	None								
<b>Safety Restrictions</b>	Check stability of load before lifting / Exclusion zone								
<b>Method</b>	Chock slings round pump body connect Slings to bow shackle.								
<b>Specific Team or Control Requirements</b>	Possible COSHH spillage (PPE required)								
<b>Special Notes</b>	All slings must not exceed 90 degrees								

## Schedule of Common Lifts

<b>Lift Plan No.</b>	012
<b>Load Description</b>	Engine Canopy/Hood for 20te – 45te Articulated Dump Truck (ADT)
<b>Lift Category</b>	Basic

### Pictures/Drawings of Slung Load

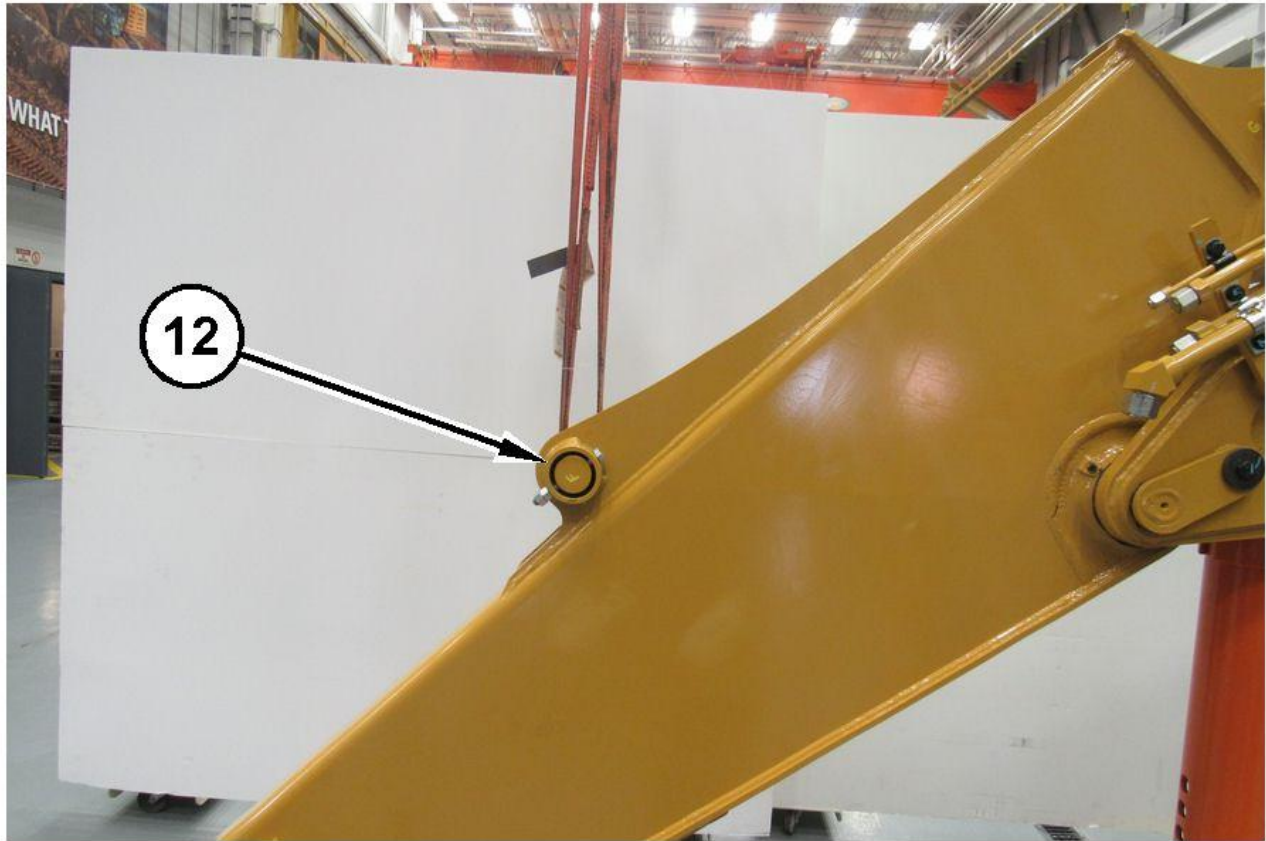


<b>Load Weight (kg)</b>	350kg	<b>Accessory Weight (kg)</b>	25kg	<b>Quick Hitch (kg)</b>	125kg	<b>No. Lifting Points</b>	2	<b>Total Weight (kg)</b>	<b>500kg</b>
<b>Characteristics</b>	Maximum: Length: 2.6m Width: 2.3m Height: 2.0m								
<b>Lifting Accessory</b>	Lifting brackets, 12te Bow shackle, 1 x 2.8te 4m 2-leg chain set								
<b>Ancillary Equipment</b>	N/A								
<b>Alternative Accessories</b>	None								
<b>Safety Restrictions</b>	Check stability of load before lifting / Exclusion zone								
<b>Method</b>	Using 10.9 bolts connect link brackets to hood connect chains to link brackets, and to shackle on Quick hitch								
<b>Specific Team or Control Requirements</b>	Possible COSHH spillage (PPE required)								
<b>Special Notes</b>	All chains must be within 90 degrees								

## Schedule of Common Lifts

<b>Lift Plan No.</b>	013
<b>Load Description</b>	Excavator Stick 1.5te – 8te
<b>Lift Category</b>	Basic

**Pictures/Drawings of Slung Load**

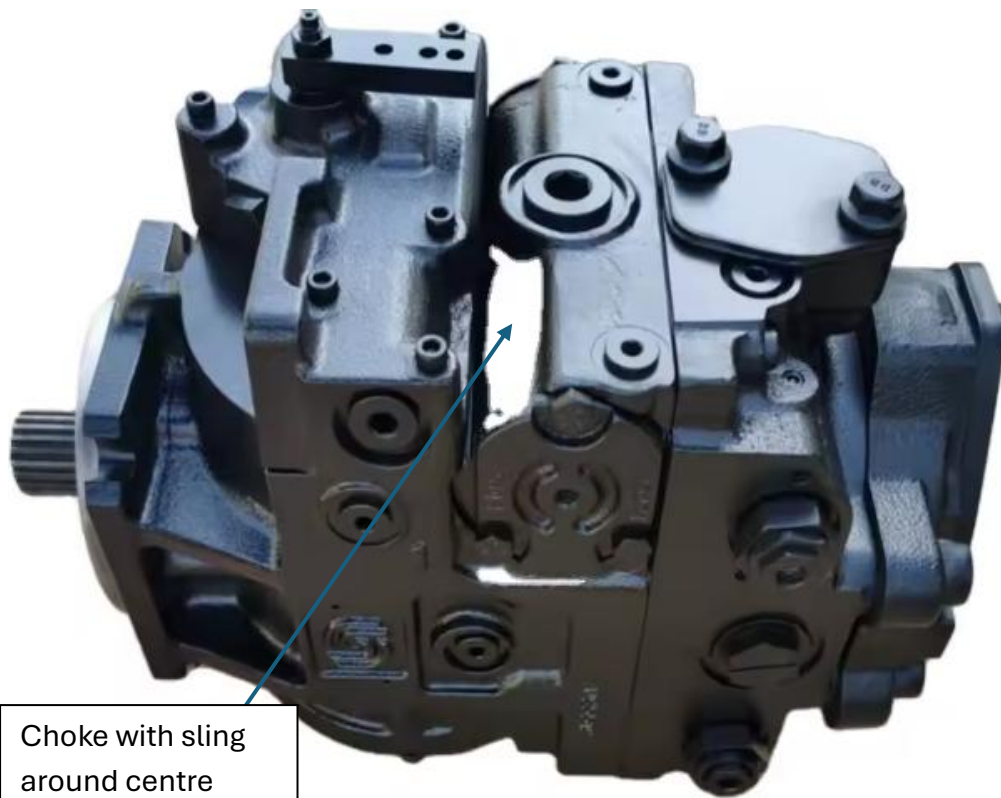


<b>Load Weight (kg)</b>	250kg	<b>Accessory Weight (kg)</b>	5kg	<b>Quick Hitch (kg)</b>	125kg	<b>No. Lifting Points</b>	1	<b>Total Weight (kg)</b>	<b>380kg</b>
<b>Characteristics</b>	Maximum: Length: 3.0m Width: 0.3m Height: 0.5m								
<b>Lifting Accessory</b>	12te Bow shackle, 1te 2m endless sling								
<b>Ancillary Equipment</b>	N/A								
<b>Alternative Accessories</b>	None								
<b>Safety Restrictions</b>	Check stability of load before lifting / Exclusion zone								
<b>Method</b>	Connect sling to cylinder mounting pin, and then to the bow shackle.								
<b>Specific Team or Control Requirements</b>	Possible COSHH spillage (PPE required)								
<b>Special Notes</b>	N/A								

## Schedule of Common Lifts

<b>Lift Plan No.</b>	014
<b>Load Description</b>	Hydraulic Pump for Single Drum Rollers 13te – 19te
<b>Lift Category</b>	Basic

### Pictures/Drawings of Slung Load



Choke with sling  
around centre

<b>Load Weight (kg)</b>	120.0kg	<b>Accessory Weight (kg)</b>	5.5kg	<b>Quick Hitch (kg)</b>	125kg	<b>No. Lifting Points</b>	1	<b>Total Weight (kg)</b>	<b>250.5kg</b>
<b>Characteristics</b>	Length 0.750m x 0.350m x 0.350m								
<b>Lifting Accessory</b>	1 x 12te bow shackle, 1 x 2te 3m Sling								
<b>Ancillary Equipment</b>	N/A								
<b>Alternative Accessories</b>	None								
<b>Safety Restrictions</b>	Test list to ensure found centre of gravity								
<b>Method</b>	Chock sling round centre of pump body, connect sling to Shackle								
<b>Specific Team or Control Requirements</b>	Possible COSHH spillage (PPE required)								
<b>Special Notes</b>	N/A								

## Schedule of Common Lifts

<b>Lift Plan No.</b>	015
<b>Load Description</b>	Track Type Tractor blades D1, D2, D3, D4, D5, D6, D65, D61
<b>Lift Category</b>	Basic

### Pictures/Drawings of Slung Load



<b>Load Weight (kg)</b>	2000kg	<b>Accessory Weight (kg)</b>	5.7	<b>Quick Hitch (kg)</b>	125kg	<b>No. Lifting Points</b>	2	<b>Total Weight (kg)</b>	<b>2130.7kg</b>
<b>Characteristics</b>	Largest size demonstrated								
<b>Lifting Accessory</b>	1 x 2.8te 4m 2-leg chain set, 1 x 12te bow shackle								
<b>Ancillary Equipment</b>	N/A								
<b>Alternative Accessories</b>	None								
<b>Safety Restrictions</b>	Ensure room to move blade and clear exclusion zone								
<b>Method</b>	Connect chain hooks to lifting eye and to bow shackle on quick hitch								
<b>Specific Team or Control Requirements</b>	Possible COSHH spillage (PPE required)								
<b>Special Notes</b>	All chains must be within 90 degrees								